

# State Street Strategic Asset Allocation ETF Portfolios

---

**Options for a Range of Investors** Six globally diversified portfolios that seek different levels of risk and return

**Institutional Expertise** Guided by the long-term asset class forecasts of the Investment Solutions Group, the team that also manages assets for central banks, pensions and other large institutions

**Cost Effective** Using index-based ETFs as building blocks, these portfolios seek to provide diversified exposure at a low cost

---

## Investment Objective

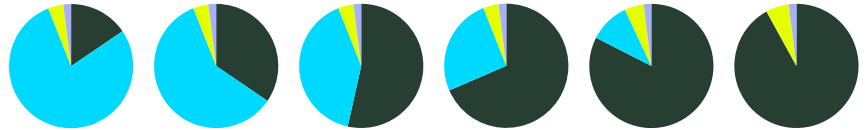
The State Street Strategic Asset Allocation ETF Portfolios seek a distinct balance of risk and return. The more aggressive portfolios focus on long-term growth, while the more conservative portfolios emphasize current income and capital preservation. All of the Strategic Asset Allocation ETF Portfolios seek broad diversification by allocating across a range of equity and fixed income asset classes, making them appropriate to serve as core holdings. They maintain their target allocations over time in order to provide consistent risk profiles, asset allocation and fund selection.

---

## Investment Strategy

The model portfolios invest mainly in index-based ETFs. Investment Solutions Group (ISG), our 130+ member investment team, constructs the portfolios based on proprietary long-term return, risk and correlation forecasts. The team seeks to identify asset allocations that meet the portfolios' return and risk objectives as efficiently as possible. The portfolios are evaluated annually and rebalanced quarterly to keep their allocations aligned with their target weights.

## Portfolio Allocations



Ticker	Asset Class	Conservative (%) 20/80	Moderate Conservative (%) 40/60	Moderate (%) 60/40	Moderate Growth (%) 75/25	Growth (%) 90/10	Maximum Growth (%) 98/2
	<b>Equity</b>	<b>15.5</b>	<b>34.5</b>	<b>53.5</b>	<b>68.5</b>	<b>82.5</b>	<b>92.0</b>
<b>SPLG</b>	SPDR® Portfolio S&P 500® ETF	7.5	17.5	27.0	32.5	39.0	42.0
<b>SPDW</b>	SPDR® Portfolio Developed World ex-US ETF	4.0	7.5	13.0	17.0	20.5	21.0
<b>SPEM</b>	SPDR® Portfolio Emerging Markets ETF	2.0	4.5	6.5	8.5	10.5	13.0
<b>SPMD</b>	SPDR® Portfolio S&P 400™ Mid Cap ETF	1.0	1.5	2.5	3.8	4.5	6.0
<b>SPSM</b>	SPDR® Portfolio S&P 600™ Small Cap ETF	1.0	1.5	2.5	3.8	4.5	6.0
<b>GWX</b>	SPDR® S&P® International Small Cap ETF	0.0	2.0	2.0	3.0	3.5	4.0
	<b>Fixed Income</b>	<b>78.5</b>	<b>59.5</b>	<b>40.5</b>	<b>25.5</b>	<b>10.5</b>	<b>0.0</b>
<b>SPAB</b>	SPDR® Portfolio Aggregate Bond ETF	51.0	44.5	26.5	14.5	5.0	0.0
<b>TIPX</b>	SPDR® Bloomberg 1-10 Year TIPS ETF	6.0	4.5	2.0	0.0	0.0	0.0
<b>EMHC</b>	SPDR® Bloomberg Emerging Markets USD Bond ETF	4.5	3.5	3.0	2.0	0.0	0.0
<b>SRLN</b>	SPDR® Blackstone Senior Loan ETF	4.5	3.5	2.5	2.0	0.0	0.0
<b>SPSB</b>	SPDR® Portfolio Short Term Corporate Bond ETF	4.0	0.0	0.0	0.0	0.0	0.0
<b>SPTS</b>	SPDR® Portfolio Short Term Treasury ETF	4.0	0.0	0.0	0.0	0.0	0.0
<b>EBND</b>	SPDR® Bloomberg Emerging Markets Local Bond ETF	2.5	2.0	1.5	1.0	0.0	0.0
<b>SPHY</b>	SPDR® Portfolio High Yield Bond ETF	2.0	1.5	1.0	1.0	0.0	0.0
<b>SPTL</b>	SPDR® Portfolio Long Term Treasury ETF	0.0	0.0	4.0	5.0	5.5	0.0
	<b>Real Assets</b>	<b>4.0</b>	<b>4.0</b>	<b>4.0</b>	<b>4.0</b>	<b>5.0</b>	<b>6.0</b>
<b>CERY</b>	SPDR Bloomberg Enhanced Roll Yield Commodity Strategy No K-1 ETF	2.0	2.0	2.0	2.0	2.0	2.0
<b>RWO</b>	SPDR® Dow Jones® Global Real Estate ETF	2.0	2.0	2.0	2.0	3.0	4.0
	<b>Cash</b>	<b>2.0</b>	<b>2.0</b>	<b>2.0</b>	<b>2.0</b>	<b>2.0</b>	<b>2.0</b>
	Cash	2.0	2.0	2.0	2.0	2.0	2.0
	<b>Weighted Average Expense Ratio</b>	<b>0.10</b>	<b>0.09</b>	<b>0.08</b>	<b>0.08</b>	<b>0.06</b>	<b>0.07</b>

Source: State Street Investment Management as of September 30, 2025. The allocations in the charts above reflect portfolio weights for equity, fixed income, real assets and cash asset classes across the spectrum of risk-based model portfolios. Allocations are as of the date indicated, are subject to change, and should not be relied upon as current thereafter. Equity asset classes include, but are not limited to, domestic equity and international equity. Fixed income asset classes include, but are not limited to, investment grade bonds, high yield bonds, convertible bonds, emerging market debt, inflation-protected bonds and Treasuries.

**Important Disclosure:** The model portfolios primarily utilize ETFs that make payments to SSGA Funds Management, Inc. or its affiliates (collectively "SSGA") for advisory or other services, which presents a conflict of interest for SSGA. Income earned by SSGA would be lower, and the returns generated by implementing one or more model portfolios might be higher, if the model portfolios were to be constructed using ETFs or other investments that do not pay fees to SSGA.

## Hypothetical Model Portfolio Performance

	1 Month (%)	3 Months (%)	YTD (%)	1 Year (%)	3 Years (%)	5 Years (%)	10 Years (%)	Since Inception (%)*
<b>Conservative</b>	<b>1.26</b>	<b>2.93</b>	<b>8.24</b>	<b>5.68</b>	<b>8.06</b>	<b>3.29</b>	-	<b>4.09</b>
Conservative Benchmark	1.20	2.00	9.89	5.27	8.74	1.46	-	2.86
<b>Moderate Conservative</b>	<b>1.77</b>	<b>4.08</b>	<b>10.84</b>	<b>8.16</b>	<b>11.24</b>	<b>5.77</b>	-	<b>6.00</b>
Moderate Conservative Benchmark	1.76	3.40	11.96	8.12	12.09	4.41	-	5.00
<b>Moderate</b>	<b>2.28</b>	<b>5.13</b>	<b>13.05</b>	<b>10.29</b>	<b>14.35</b>	<b>8.08</b>	-	<b>7.80</b>
Moderate Benchmark	2.32	4.82	14.03	11.00	15.50	7.39	-	7.37
<b>Moderate Growth</b>	<b>2.61</b>	<b>5.96</b>	<b>14.83</b>	<b>12.08</b>	<b>16.60</b>	<b>9.89</b>	-	<b>9.07</b>
Moderate Growth Benchmark	2.74	5.89	15.58	13.18	18.09	9.64	-	9.04
<b>Growth</b>	<b>2.92</b>	<b>6.74</b>	<b>16.48</b>	<b>13.69</b>	<b>18.82</b>	<b>11.78</b>	-	<b>10.33</b>
Growth Benchmark	3.16	6.96	17.12	15.37	20.71	11.90	-	10.56
<b>Maximum Growth</b>	<b>3.00</b>	<b>7.33</b>	<b>17.39</b>	<b>15.06</b>	<b>20.41</b>	<b>13.20</b>	-	<b>12.21</b>
Maximum Growth Benchmark	3.38	7.54	17.94	16.54	22.12	13.12	-	12.68

Source: State Street Investment Management as of September 30, 2025.

\* Inception date: October 19, 2016, with the exception of the Maximum Growth Portfolio which has an inception date of August 30, 2019.

**Performance returns for periods of less than one year are not annualized.**

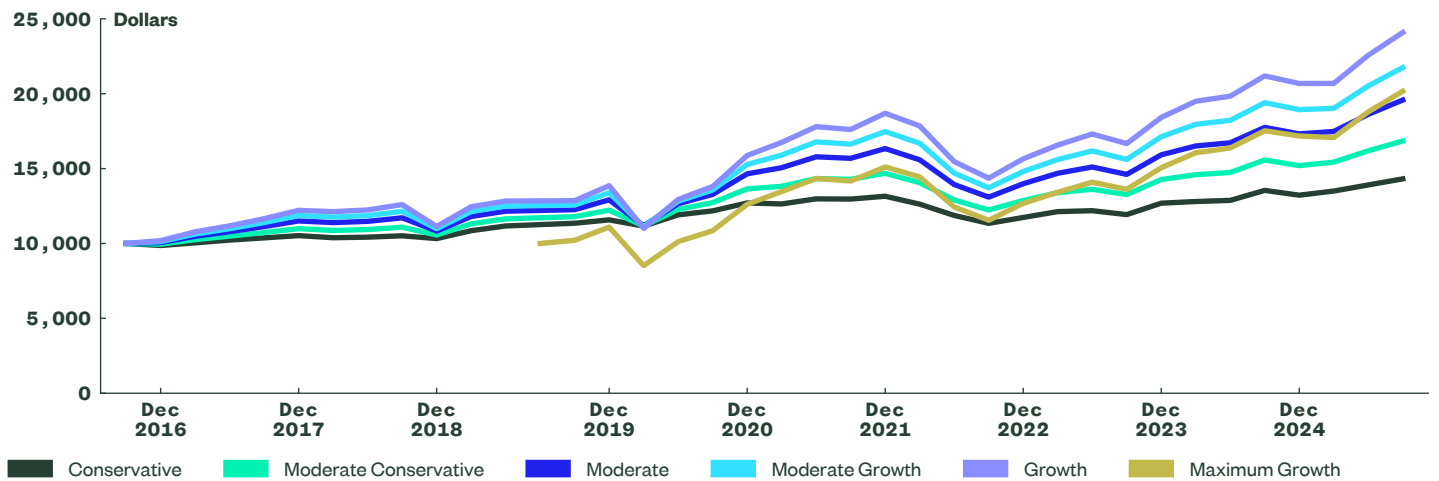
**Important Performance Reporting Information: Past performance is not an indicator of future performance.** The model portfolio strategy returns presented are those of model paper portfolios attributable to each strategy and reflect the contemporaneous investment strategy decisions made by SSGA's investment professionals for each performance period presented. The returns do not reflect the results of the actual trading of any account or group of accounts and are thereby hypothetical in nature. All returns greater than one year are annualized. The returns reflect the reinvestment of dividends and interest. **Strategy returns are shown net of hypothetical trading fees based on a trade commission rate of 0.0025 cents per share. The impact of ETF fees is reflected in the returns for all periods presented.** SSGA does not charge any separate model portfolio strategist fees in association with the strategies and therefore no such fee is reflected in the returns presented. SSGA does not manage the accounts of retail investors pursuant to the strategies and the strategies are only available to retail investors through third party firms that offer account management and other services to retail investors. The actual performance results of an investor utilizing a third party advisor for account management would be lower as a result of the imposition of management fees and custodial fees by third party firms. Additionally, actual trading fees may be greater than those based on the hypothetical commission rate described above. You should consult with your advisor to learn more about the fees that will be applied to a particular account or type of account. The performance of accounts managed by a third party advisor that receives access to the strategies may differ from the performance shown for a variety of reasons, including but not limited to: the fees assessed by the advisor and other third parties; the advisor's decision to exercise its discretion to implement a given strategy in a way that differs from the provided by SSGA; the timing of the advisor's implementation of strategy updates; investor imposed investment restrictions; and the timing and nature of investor initiated cash flow activity in the account. For all of the reasons described above, actual performance may differ substantially from the hypothetical results. Hypothetical results have inherent limitations because they do not reflect actual trading by SSGA during the period described and may not reflect the impact that material economic and market factors might have had on SSGA's decision-making if it was actually managing clients' money pursuant to the strategies. There is no guarantee that any of the investment strategies will be successful and investors should be aware that they can lose money investing assets in accordance with the strategies. Index returns are unmanaged and do not reflect the deduction of any fees or expenses. Index returns reflect capital gains and losses, income, and the reinvestment of dividends.

## Benchmark Composition

	Conservative (%)	Moderate Conservative (%)	Moderate (%)	Moderate Growth (%)	Growth (%)	Maximum Growth (%)
<b>MSCI AC World IMI Index</b>	20.00	40.00	60.00	75.00	90.00	98.00
<b>Bloomberg Global Aggregate Bond Index</b>	78.00	58.00	38.00	23.00	8.00	-
<b>Bloomberg 1-3 Month US Treasury Bill Index</b>	2.00	2.00	2.00	2.00	2.00	2.00

Source: State Street Investment Management as of September 30, 2025.

## Hypothetical Growth of \$10K



Source: State Street Investment Management as of September 30, 2025. Inception date: October 19, 2016, with the exception of the Maximum Growth Portfolio which has an inception date of August 30, 2019.

## Calendar Year Returns

	2015 (%)	2016 Partial (%)	2017 (%)	2018 (%)	2019 (%)	2020 (%)	2021 (%)	2022 (%)	2023 (%)	2024 (%)	2025 YTD (%)
<b>Conservative</b>	-	<b>-1.35</b>	<b>6.68</b>	<b>-1.88</b>	<b>12.10</b>	<b>9.76</b>	<b>3.53</b>	<b>-10.77</b>	<b>8.12</b>	<b>4.21</b>	<b>8.24</b>
Conservative Benchmark	-	-3.71	10.41	-2.89	10.56	10.86	-0.32	-16.22	8.79	1.88	9.89
<b>Moderate Conservative</b>	-	<b>-0.45</b>	<b>10.39</b>	<b>-3.86</b>	<b>15.69</b>	<b>11.66</b>	<b>7.59</b>	<b>-12.37</b>	<b>10.90</b>	<b>6.50</b>	<b>10.84</b>
Moderate Conservative Benchmark	-	-2.59	12.82	-4.63	14.41	12.50	4.12	-16.59	11.91	5.40	11.96
<b>Moderate</b>	-	<b>0.59</b>	<b>14.36</b>	<b>-5.86</b>	<b>19.25</b>	<b>13.43</b>	<b>11.51</b>	<b>-14.37</b>	<b>13.80</b>	<b>8.79</b>	<b>13.05</b>
Moderate Benchmark	-	-0.73	16.93	-6.41	18.32	13.92	8.71	-17.02	15.09	9.02	14.03
<b>Moderate Growth</b>	-	<b>1.27</b>	<b>17.10</b>	<b>-7.36</b>	<b>21.87</b>	<b>14.08</b>	<b>14.40</b>	<b>-15.29</b>	<b>15.72</b>	<b>10.55</b>	<b>14.83</b>
Moderate Growth Benchmark	-	0.40	19.47	-7.77	21.27	14.84	12.25	-17.38	17.50	11.79	15.58
<b>Growth</b>	-	<b>1.88</b>	<b>19.86</b>	<b>-8.79</b>	<b>24.44</b>	<b>14.54</b>	<b>17.77</b>	<b>-16.27</b>	<b>17.65</b>	<b>12.31</b>	<b>16.48</b>
Growth Benchmark	-	1.16	21.18	-9.15	24.25	15.63	15.87	-17.78	19.94	14.62	17.12
<b>Maximum Growth</b>	-	-	-	-	<b>10.94</b>	<b>13.71</b>	<b>19.77</b>	<b>-16.10</b>	<b>18.78</b>	<b>14.08</b>	<b>17.39</b>
Maximum Growth Benchmark	-	-	-	-	11.11	16.00	17.84	-18.01	21.26	16.15	17.94

Source: State Street Investment Management as of September 30, 2025.

\* Inception date: October 19, 2016, with the exception of the Maximum Growth Portfolio which has an inception date of August 30, 2019.

**Important Performance Reporting Information: Past performance is not an indicator of future performance.** The model portfolio strategy returns presented are those of model paper portfolios attributable to each strategy and reflect the contemporaneous investment strategy decisions made by SSGA's investment professionals for each performance period presented. The returns do not reflect the results of the actual trading of any account or group of accounts and are thereby hypothetical in nature. All returns greater than one year are annualized. The returns reflect the reinvestment of dividends and interest. **Strategy returns are shown net of hypothetical trading fees based on a trade commission rate of 0.0025 cents per share. The impact of ETF fees is reflected in the returns for all periods presented.** SSGA does not charge any separate model portfolio strategist fees in association with the strategies and therefore no such fee is reflected in the returns presented. SSGA does not manage the accounts of retail investors pursuant to the strategies and the strategies are only available to retail investors through third party firms that offer account management and other services to retail investors. The actual performance results of an investor utilizing a third party advisor for account management would be lower as a result of the imposition of management fees and custodial fees by third party firms. Additionally, actual trading fees may be greater than those based on the hypothetical commission rate described above. You should consult with your advisor to learn more about the fees that will be applied to a particular account or type of account. The performance of accounts managed by a third party advisor that receives access to the strategies may differ from the performance shown for a variety of reasons, including but not limited to: the fees assessed by the advisor and other third parties; the advisor's decision to exercise its discretion to implement a given strategy in a way that differs from the provided by SSGA; the timing of the advisor's implementation of strategy updates; investor imposed investment restrictions; and the timing and nature of investor initiated cash flow activity in the account. For all of the reasons described above, actual performance may differ substantially from the hypothetical results. Hypothetical results have inherent limitations because they do not reflect actual trading by SSGA during the period described and may not reflect the impact that material economic and market factors might have had on SSGA's decision-making if it was actually managing clients' money pursuant to the strategies. There is no guarantee that any of the investment strategies will be successful and investors should be aware that they can lose money investing assets in accordance with the strategies. Index returns are unmanaged and do not reflect the deduction of any fees or expenses. Index returns reflect capital gains and losses, income, and the reinvestment of dividends.

## Portfolio Statistics

	Conservative	Moderate Conservative	Moderate	Moderate Growth	Growth	Maximum Growth
Yield (%)	3.93	3.40	2.94	2.60	2.14	1.92
Duration (Yrs.)	5.18	5.63	6.59	7.53	10.30	0.15
Sharpe Ratio (3 Yr.)	0.49	0.81	0.98	1.08	1.15	1.23
Standard Deviation (3 Yr.) (%)	6.02	7.59	9.46	10.70	11.91	12.43

Source: FactSet as of September 30, 2025.

## statestreet.com/im

### Information Classification: General

**State Street Global Advisors (SSGA) is now State Street Investment Management. Please go to [statestreet.com/investment-management](https://statestreet.com/investment-management) for more information.**

**State Street Investment Management**  
One Congress Street, Boston MA 02114  
T: +1617 786 3000.

### Glossary

**Duration** A commonly used measure, expressed in years, that measures the sensitivity of the price of a bond or a fixed-income portfolio to changes in interest rates or interest-rate expectations. The greater the duration, the greater the sensitivity to interest rates changes, and vice versa. Specifically, the specific duration figure indicates, on a percentage basis, by how much a portfolio of bonds will rise or fall when interest rates shift by 1 percentage point.

**Sharpe Ratio** A measure for calculating risk-adjusted returns that has become the industry standard for such calculations. It was developed by Nobel laureate William F. Sharpe. The Sharpe ratio is the average return earned in excess of the risk-free rate per unit of volatility or total risk. The higher the Sharpe ratio the better.

**Standard Deviation** A statistical measure of volatility that quantifies the historical dispersion of a security, fund or index around an average. Investors use standard deviation to measure expected risk or volatility, and a higher standard deviation means the security has tended to show higher volatility or price swings in the past. As an example, for a normally distributed return series, about two-thirds of the time returns will be within 1 standard deviation of the average return.

**Yield** The income produced by an investment, typically calculated as the interest received annually divided by the price of the investment. Yield comes from interest-bearing securities, such as bonds and dividend-paying stocks.

### Important Risk Information

**State Street Global Advisors and its affiliates have not taken into consideration the circumstances of any particular investor in producing this material and are not making an investment**

**recommendation or acting in fiduciary capacity in connection with the provision of the information contained herein. Past performance is no guarantee of future results. It is not possible to invest directly in an index. Index performance does not reflect charges and expenses associated with the fund or brokerage commissions associated with buying and selling a fund. Index performance is not meant to represent that of any particular fund.**

All information is from SSGA unless otherwise noted and has been obtained from sources believed to be reliable, but its accuracy is not guaranteed. There is no representation or warranty as to the current accuracy, reliability or completeness of, nor liability for, decisions based on such information and it should not be relied on as such.

Investing involves risk including the risk of loss of principal. Although steps can be taken to help reduce risk it cannot be completely removed. If your account holds Russian securities and instruments, then as of the date of this publication, they have been fair valued. Such fair value may be zero. If your portfolio holds such Russian securities and instruments, then the portfolio may not be able to dispose of such securities and instruments depending on the relevant market, applicable sanctions requirements, and/or Russian capital controls or other counter measures. In such circumstances, the portfolio would continue to own and have exposure to Russian-related issuers and markets. Please refer to your portfolio holdings report.

**ETFs** trade like stocks, are subject to investment risk, fluctuate in market value and may trade at prices above or below the ETFs' net asset value. Brokerage commissions and ETF expenses will reduce returns.

**Asset allocation** is a method of diversification which positions assets among major investment categories. While asset allocation may help reduce the investment risk, it does not ensure a profit or guarantee against a loss.

**Diversification** does not ensure a profit or guarantee against loss.

**Actively managed model portfolios** do not seek to replicate the performance of a specified index. An actively managed model portfolio may underperform its benchmark. An investment in the model portfolio is not appropriate for all investors and is not intended to be a complete investment program. Investing in the model portfolio involves risks, including the risk that investors may receive little or no return on the investment or that investors may lose part or

even all of the investment.

Carefully consider the funds within the model portfolios' investment objectives, risk factors, and charges and expenses before investing. This and other information can be found in the funds' prospectuses, and if available, the summary prospectuses which may be obtained by visiting respective fund family websites. Read the prospectus carefully before investing.

Investing in **high yield fixed income securities**, otherwise known as "junk bonds," is considered speculative and involves greater risk of loss of principal and interest than investing in investment grade fixed income securities. These lower-quality debt securities involve greater risk of default or price changes due to potential changes in the credit quality of the issuer. Issuers of **convertible securities** may not be as financially strong as those issuing securities with higher credit ratings and may be more vulnerable to changes in the economy.

Other risks associated with convertible bond investments include: Call risk which is the risk that bond issuers may repay securities with higher coupon or interest rates before the security's maturity date; liquidity risk which is the risk that certain types of investments may not be possible to sell the investment at any particular time or at an acceptable price; and investments in derivatives, which can be more sensitive to sudden fluctuations in interest rates or market prices, potential illiquidity of the markets, as well as potential loss of principal.

Investing in **REITs** involves certain distinct risks in addition to those risks associated with investing in the real estate industry in general. Equity REITs may be affected by changes in the value of the underlying property owned by the REITs, while mortgage REITs may be affected by the quality of credit extended. REITs are subject to heavy cash flow dependency, default by borrowers and self-liquidation. REITs, especially mortgage REITs, are also subject to interest rate risk (i.e., as interest rates rise, the value of the REIT may decline).

**Foreign (non-US) securities** may be subject to greater political, economic, environmental, credit and information risks. Foreign securities may be subject to higher volatility than US securities, due to varying degrees of regulation and limited liquidity. These risks are magnified in emerging markets.

**Bonds** generally present less short-term risk and volatility than stocks, but contain interest-rate risk (as interest rates rise, bond prices usually fall); issuer default risk; issuer credit risk; liquidity risk; and inflation risk. These effects are usually pronounced for longer-term securities.

Any fixed income security sold or redeemed prior to maturity may be subject to a substantial gain or loss.

The information provided does not constitute investment advice and it should not be relied on as such. It should not be considered a solicitation to buy or an offer to sell a security. It does not take into account any investor's particular investment objectives, strategies, tax status or investment horizon. You should consult your tax and financial advisor.

**SSGA has prepared this material for investment professional/advisor use. It is the responsibility of the investment professional/advisor to have adequate policies and procedures in place for presenting this fact sheet to any eligible retail audience.**

### Intellectual Property Information

The S&P 500® Index is a product of S&P Dow Jones Indices LLC or its affiliates ("S&P DJI") and have been licensed for use by State Street Global Advisors. S&P, SPDR®, S&P 500®, US 500 and the 500 are trademarks of Standard & Poor's Financial Services LLC ("S&P"); Dow Jones® is a registered trademark of Dow Jones Trademark Holdings LLC ("Dow Jones") and has been licensed for use by S&P Dow Jones Indices; and these trademarks have been licensed for use by S&P DJI and sublicensed for certain purposes by State Street Global Advisors. The fund is not sponsored, endorsed, sold or promoted by S&P DJI, Dow Jones, S&P, their respective affiliates, and none of such parties make any representation regarding the advisability of investing in such product(s) nor do they have any liability for any errors, omissions, or interruptions of these indices. The trademarks and service marks referenced herein are the property of their respective owners. Third party data providers make no warranties or representations of any kind relating to the accuracy, completeness or timeliness of the data and have no liability for damages of any kind relating to the use of such data.

The whole or any part of this work may not be reproduced, copied or transmitted or any of its contents disclosed to third parties without SSGA's express written consent.

© 2025 State Street Corporation.  
All Rights Reserved.  
3794864.4.9.AM.INST  
Expiration Date: 01/31/2026